

**Double Rack Oven - Gas**

**Model: LRO-2G5**



**Model LRO-2G5 Shown**  
(Rack not included)

Maximum Capacities per Oven:	
18" x 26" full-size Sheet Pans †	40
12" x 20" x 4" Hotel Pans #	26
1 lb loaves of bread	200
1-1/2 lb loaves of bread	150

† Based on 3" spacing # Based on 6" Spacing



Meets ANSI Z83.11 and NSF 4 Standards

**Short Bid Specification:**

Rack oven shall be an **LBC Bakery Equipment Model LRO-2G5** 290 kBTU/hr gas heated, rotating, double rack capacity oven with: linear counter-flow heat exchanger; waterfall type steam generation system; 5" thick compartment insulation; rated at 0" combustible wall clearance, sides and back; heavy-duty rack lift and rotate with gear driven rotation system; standard digital control or optional Android control; an integrated hood meeting NFPA 96 and Type I & II construction standards, plus all the features listed.

**Standard Product Warranty:**

1 Year Parts and Labor (Contiguous US, Alaska, Hawaii and Canada)

**Construction Features:**

- Heavy-duty stainless steel interior and exterior
- Cooking compartment insulated with 5" high-temp insulation
- Automatic, heavy-duty "B" style lift and gear-driven rotation system
- Heavy-duty door with 21" x 57.5" double-pane viewing window
- Interior door safety release mechanism
- Oven accommodates two single or one double rack

**Performance Features:**

- 100-525 deg F temperature range
- Patent pending linear counter-flow heat exchanger
- Burner manifold uses inshot burners with hot surface ignitor
- High volume, waterfall steam system
- Exhaust heat recovery system increases fuel efficiency
- Three-point air circulation system with adjustable shutters
- Self adjusting clutch protects operator and prevents oven damage
- Rack drive automatically lifts and lowers with door operation
- Racks load at floor level (no ramp)

**Integrated Hood Features and Performance:**

- Meets the construction requirements of NFPA 96 & UMC for Type I & II Hoods (fire system, if required, shall be by others)
- Fully integrated hood with single point exhaust connection
- 20 ga fully welded stainless steel body construction
- 5.9 sqft hood capture area. Filter velocity = 120 fpm @ 0.3 inwc and 800 cfm.

**Controls Package:**

- **Digital Display Control** (standard configuration):
  - 40 programmable recipes with 6 Quick Select recipe buttons
  - Single-step cooking (standard) or optional 6-step cooking with 30 programmable recipes
  - Steam, Vent, Blower Delay and Pulse Air
  - Selectable Automatic Temperature Setback
- **Android Control** (optional):
  - 7" full-color graphic display & touch screen
  - Full feature recipe programming or manual operation
  - Wi-Fi interface
  - Built-in camera
  - Supervisory Features:
    - > Large storage library for recipes with up to 6 steps
    - > Product name, number and photo library
    - > Easy-select recipe list with photos
    - > Recipe day planner
    - > Bi-directional email access to recipes & day planner

**Double Rack Oven - Gas**

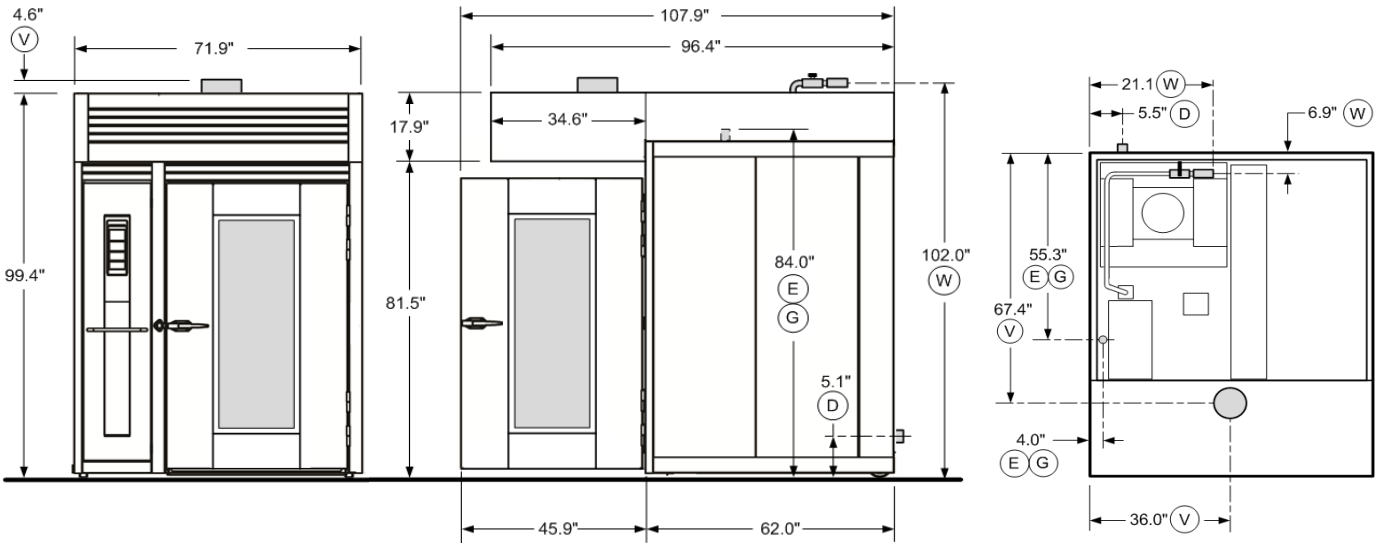
**Model: LRO-2G5**

**Installation Requirements:**

- Oven ships split into two halves for movement through 36" opening. Two (2) crates = 114"H x 46"W x 70"D each.
- 112" ceiling clearance required for tip-up
- No buried utilities
- Floor must be noncombustible supported by noncombustible structure
- Clearance from combustible surfaces: 0", sides and back

**Options & Accessories:**

- |                                   |  |   |
|-----------------------------------|--|---|
| <input type="checkbox"/> LP Gas   | <input type="checkbox"/> 120V,3ph / 240V,3ph,60Hz Electrical | <input type="checkbox"/> Manual Backup Control  |
| <input type="checkbox"/> "A" Lift | <input type="checkbox"/> 120V,1ph / 480V,3ph,60Hz Electrical | <input type="checkbox"/> Single or Double Racks |
| <input type="checkbox"/> "C" Lift | <input type="checkbox"/> Android Control                     | <input type="checkbox"/> Correctional Package   |



(E) Electrical Requirements:					Utility Requirements:			
Elec Choices	Voltage	Total kW	MCA	MOP	(V) Vent	(G) Gas	(W) Water	(D) Drain
Standard	120V,3ph / 208V,3ph,60Hz	1.8	15	20	8" round collar (vent not included)	1" NPT, 290 kBTU/hr, 5-14 inwc	1/2"NPT, 9 gpm flow @ 40 psi	3/4NPT, 210 deg F, 1 gpm max
Option	120V,3ph / 240V,3ph,60Hz	1.8	15	20				
Option	120V,1ph / 480V,3ph,60Hz	1.5 / 1.8	15 / 15	20 / 20	f		‡	

**IMPORTANT:** Ensure your water supply meets these minimum water quality specs:

Water Quality Requirements:			
Parameter	Value	Parameter	Value
Alkalinity	< 22 ppm	Magnesium	< 0.65 ppm
Aluminum	< 17 ppb	pH	8.5
Calcium	< 3 ppm	Sodium	< 8.5 ppm
Free Chlorine Residual	< 0.6 ppm	Total Hardness	< 11.9 ppm

Shipping Information:			
H x W x D	Weight		Freight Class
	Actual	Shipping	
114"H x 46"W x 70"D	3380 lbs	4380 lbs	85

f Consult your local codes for installation requirements  
‡ Normal water consumption is approximately 5.5 gal/hr